

**\*\*BRACKETS IN PICTURES ARE SOLD SEPERATELY FOR STULL FEEDERS! THIS SCALE KIT CAN BE USED FOR ANY FEEDER. STULL 300/600 UTV FEEDERS DO REQUIRE THIS BRACKET FOR SUPPORT AS STATED IN WARRANTY! YOU CAN MAKE YOUR OWN (\*\*VOIDS WARRANTY\*\*) OR PLEASE CONTACT US FOR PURCHASE AT 800-369-4131\*\***



1- CIRCUIT BOARD



2 - LOAD CELL/FEEDER SUPPORT BRACKET



2-BRACKET SHIMS



4 - LOAD CELLS



4 - LOAD CELL SHIM



4 - DOUBLE NUT CONNECTOR FOR BOLTS ON LOAD CELL

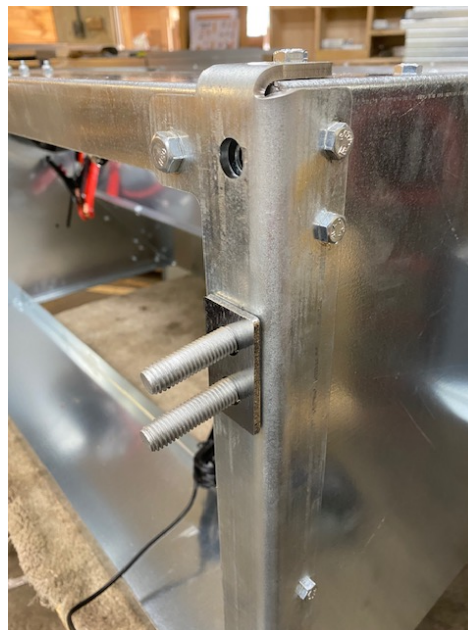


4-MOUNTING BRACKET

**\*\*\*\* ON SOME OLDER MODELS YOU MIGHT HAVE TO MOUNT LOAD CELL/FEEDER SUPPORT BRACKET USING HOLES ON ALL 4 CORNERS. DRILL 4-15/32 HOLES FOR MOUNTING LOAD CELLS TO BOTTOM OF FEEDER, ALL 1/4 INCH HOLES TO BOLT BRACKET TO FEEDER (USE THE SHIM TO FILL IN GAP BETWEEN BRACKET AND FEEDER) AND THERE IS A 3/8 INCH HOLE THAT MUST BE DRILLED OUT AND BOLT PLACED IN HOLE TO TIE EVERYTHING TOGETHER JUST OFF THE CORNER CONNECTING SUPPORT BRACKET TO BOTTOM SIDE TO SIDE RAIL\*\*\*\***



1-PUT LOAD CELL PROTECTOR AGAINST BOTTOM OF FEEDER ALIGNING THE 2 HOLES AT TOP AND BOTTOM. INSERT BOLTS THRU HOLES ON BOTTOM OF FEEDER AND BRACKET. Please remember to put bracket shim between load cell/feeder support bracket and bottom end of feeder where there is a gap from side to side. At this time your are able to put bolts in all the holes. \*\*\*\*Remember on the 3/8 hole to use washer between bracket and bottom rail to fill gap\*\*\*\*



2-INSTALL LOAD CELL SHIM AS SHOWN



3-TAKE FOOT OFF OF LOAD CELL. INSTALL LOAD CELL AS SHOWN. MAKE SURE ARROW IS POINTING UP TOWARD FEEDER





4-INSTALL DOUBLE NUT CONNECTOR AS SHOWN AND TIGHTEN BOLT AT TOP 1ST. MAKE SURE LOAD CELL IS NOT TOUCHING SIDES OF BRACKET AND BRACKET IS STRAIGHT. NOW TIGHTEN OTHER BOLT



5-TAKE FOOT AND INSERT STUD THRU BIG HOLE ON MOUNTING BRACKET AND THREAD FOOT INTO LOAD CELL UNTIL NUT IS TOUCHING



WHEN YOUR FINISHED IT SHOULD LOOK LIKE THIS. AT THIS POINT REPEAT STEPS ON ALL 4 CORNERS. \*\*WHEN YOU PUT IN PLACE FOR MOUNTING PLEASE MAKE SURE THERE IS 1/4" GAP BETWEEN MOUNTING BRACKET AND DOUBLE NUT CONNECTOR\*\*



6-AT THIS TIME MOUNT THE CIRCUIT BOARD TO BACKSIDE TOWARD CAB ON BOTTOM BRACE. ON OLDER MODELS YOU MIGHT HAVE TO MARK AND DRILL THE 4 HOLES FOR MOUNTING WITH A 3/16 DRILL BIT. USE 4- 10-24 x 1/2 BOLTS AND LOCK NUTS TO MOUNT. (NOT INCLUDED)



7-PLUG IN ALL 4 LOAD CELL FEET TO THE 4 BLACK WIRES COMING OUT OF CIRCUIT BOARD. IF HOLES ARE NOT IN TOP OF BOTTOM BRACE TO ZIP TIE WIRES UP YOU MAY DO SO IF DESIRED TO REDUCE THE CHANCE OF DAMAGES







\*\* Please remember to put support bracket shim between load cell/feeder support bracket and bottom end of feeder. Please call Josh at 870-743-9546 if needed.

\*\*PLEASE CALL 870-743-9546 WITH ANY QUESTION INCLUDING THE CALIBRATION PROCESS\*\*

8- AT THIS TIME YOU CAN PUT YOUR FEEDER IN PLACE AND MOUNT TO YOUR SURFACE AREA USING THE 4 REMAINING 1/2 IN HOLES LEFT OPEN ON EACH CORNER. THIS SCALE SYSTEM MUST BE MOUNTED TO A SOLID FLAT SURFACE TO OPERATE CORRECTLY!! (1/2 BOLTS ARE NOT INCLUDED). AFTER MOUNTING, IT IS TIME TO INSTALL MONITOR TO YOUR PREFERRED LOCATION AND RUN MONITOR WIRE BACK TO CIRCUIT BOARD AND PLUG IN.

9- BY USING THE MANUAL OR GOING ONLINE TO THE WEBSITE PROVIDED ON MONITOR YOU ARE NOW READY TO CALIBRATE YOUR SCALE. **PLEASE REMEMBER TO BE ON A LEVEL SURFACE. CALL 800-369-4131 IF NEEDED!**

\*\*\*\*QUICK REFERENCE FOR CALIBRATION\*\*\*\*

MAKE SURE HOPPER IS EMPTY / PRESS PRINT & HOLD AT SAME TIME (AT THIS POINT YOUR PRINT BUTTON IS THE ENTER BUTTON & ACCUM IS SAVE)  
 C01-2 // C02-0 // C03-1 // C04-SIZE OF FEEDER +500 lbs // C05-1 THEN ENTER (THIS CALIBRATES SCALE TO ZERO) // C06-1 (BEFORE PRESSING ENTER PLACE 100 lbs ON TOP OF FEEDER THEN PRESS ENTER THEN CHANGE NUMBERS TO 100 AND PRESS ENTER AGAIN) ONCE IT SAYS CALEND YOU ARE READY TO PRESS ENTER AGAIN // C08-0 // C09-10 // C10-1 // C11-0 // C21-0 // C28-6\*\*\*NOTE: IF SCALE DOESNT FUNCTION PROPERLY GO TO C07 THEN ENTER AND MAKE 1 HIT ENTER AND START PROCESS OVER\*\*\*\* THIS DOES A FACTORY RESET\*\*\*\*

**STULL FEEDERS WARRANTY**

Your Stull Feeder is covered by a one (1) year Limited Warranty on material and workmanship from date of original purchase. Purchase must have been made through an Authorized Dealer. This warranty covers defects in workmanship and materials. This warranty does not apply to units damaged due to intentional abuse. Auger and Drag Feeder units are designed for bolting to a flat surface. If mounted on load cells for a scale you must use extra metal between load cell and bottom ends of feeder for reinforcement. We offer this for each feeder if not already installed. Failure to do so will void Warranty! Our auger feeders will dispense most types of feed/cubes, but may not all. Warranty does not cover this issue. An In-line Fuse of 50 amps for 300/600 Auger Feeders, 60 amps for the Truck Auger Feeders and 600 lb Drag Feeder is recommended but may not be provided.

A purchase from individuals, unauthorized dealers, or unauthorized Internet sites voids the warranty.

Scales are water resistant but not waterproof! Please do not pressure wash directly on scale monitor, connectors or junction box! FAILURE TO COMPLY WILL VOID WARRANTY! THIS SCALE SYSTEM MUST BE MOUNTED TO A SOLID FLAT SURFACE TO OPERATE CORRECTLY!! FAILURE TO DO SO WILL VOID WARRANTY!! THIS WARRANTY DOES NOT APPLY TO CORROSION, RUST, ETC. AFFILIATED WITH PRODUCTS USED CONTAINING EXTREME SALT CONTENT.

Return authorization must be obtained from Customer Service at 800-369-4131 prior to returning product.

\*\*NOTE: There will be a 20% restocking fee on all returned feeders not associated to warranty issues.

www.stullfeeders.com

PLEASE RETURN BOTTOM PORTION WITHIN 30 DAYS OF PURCHASE. THANK YOU.

PRODUCT REGISTRATION

STULL FEEDERS, INC.

-----  
*First Name:* \_\_\_\_\_ *Initial:* \_\_\_\_\_ *Last Name:* \_\_\_\_\_

*Street:* \_\_\_\_\_ *Apt. #:* \_\_\_\_\_

\_\_\_\_\_ *State:* \_\_\_\_\_ *Zip:* \_\_\_\_\_

*Email Address:* \_\_\_\_\_ *Phone #:* \_\_\_\_\_

*Date of Purchase:* \_\_\_\_\_ *Where Purchased:* \_\_\_\_\_

*Item Purchased:* \_\_\_\_\_

*Serial #* \_\_\_\_\_

Send Product Registration to:

STULL FEEDERS, INC.  
1595 Mountain Vista Rd., Harrison, AR 72601